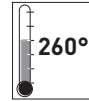


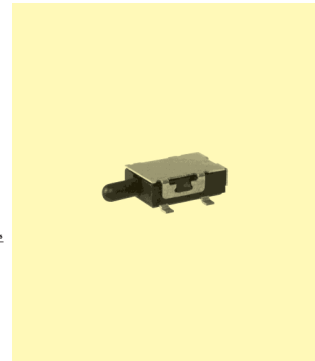
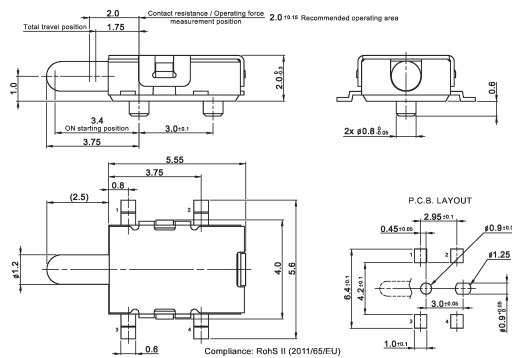
# Detector Switches



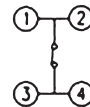
## Specifications:

Contact rating:	5 V DC, 1 mA (DTS 110 CBP-RT-1: 12 V DC, 100 mA)
Contact resistance:	< 1 Ω
Insulation resistance:	> 100 MΩ
Dielectric strength:	100 V, 50 Hz for the duration of 1 minute
Operating temperature:	-40 °C to +85 °C (DTS 110 CBP-RT-1: -25 °C to +85 °C)
Operating force:	< 1.2 N
Mechanical life:	minimum 100 000 operations
Material:	Contacts: copper alloy, silver- or gold-plated Terminals: brass, silver- or gold-plated Case and actuator: PA9T / PPS / HTN Cover: stainless steel

## Models: Switching functions



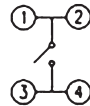
DTS 110 BBP-RT (gold-plated) on – (mom)



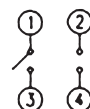
DTS 110 CBP-RT-1 (gold-plated) off – mom

DTS 110 CB PRT1S-LF (gold-plated) off – mom

DTS 110 CB PRT2S-LF (for Smoke Detector, gold-plated 0.5 μm) off – mom



DTS 110 C P R-T off – mom



Further types on request